



E & A CONSULTING GROUP, INC.

Engineering Answers

10909 Mill Valley Road, Suite 100 • Omaha, NE 68154-3950
P 402.895.4700 • F 402.895.3599
www.eacg.com

Dear Homeowner:

The SID has contracted concrete work to be done on the streets in your SID. A contractor will be on site to do work which includes removing the existing concrete that is damaged and replacing it with new pavement.

Throughout the course of this project, there could be some minimal damage done to yards and or sprinkler systems. The contractor that is on site will be responsible for replacing any damaged sprinkler lines and/or heads. They will also be replacing any sod that is torn up while on site. Once the new sod is laid, it will be the responsibility of the homeowner at each lot to water the new sod until it has re-established itself.

Before starting the work on site, each contractor must put in a call and have all the utilities in the area located. You might notice some areas in your yard that have been flagged and/or spray painted. This does not indicate the area in which they will be working. It is just to give them an idea of what kind of utilities are in the area that could possibly be hit while the contractor is on site working.

All work that is completed in public Right-of-Way and follow City of Omaha and Sarpy County specifications.

The work in your SID should not take longer than 30 days to complete. Please let me know if you have any questions or concerns on this at all.

Thank You,

A handwritten signature in black ink, appearing to read 'Chris Anderson', written in a cursive style.

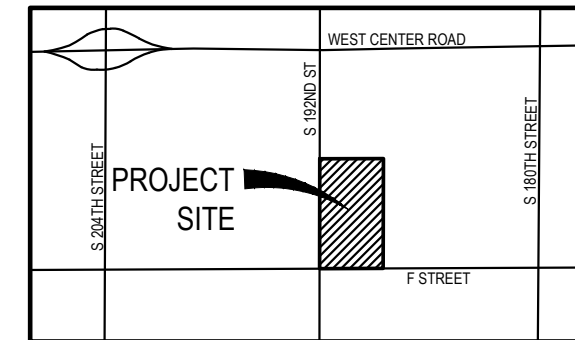
Chris Anderson
Construction Administration Tech.
Engineering Answers...by transforming concepts into reality
E & A Consulting Group, Inc.
10909 Mill Valley Road, Suite 100 • Omaha, NE 68154
402.895.4700 (o)
eacg.com



OAKMONT

2024 STREET RECONSTRUCTION

SID NO. 477
DOUGLAS COUNTY, NEBRASKA



VICINITY MAP

INDEX OF SHEETS

SHEET NO.	DESCRIPTION
1	COVER
2	NORTH
3	SOUTH
4	TOTAL QUANTITIES
5	COMPOSITE MAP

APPROXIMATE BID QUANTITIES

ITEM	DESCRIPTION	QUANTITY	UNIT
1	CONCRETE PAVEMENT REPAIR, LARGE AREA	785	SY
2	CONCRETE PAVEMENT REPAIR, SMALL AREA	470	SY
3	FULL DEPTH SAW CUT EXISTING PAVEMENT	1,517	LF
4	ADJUST WATER VALVE TO GRADE	2	EA
5	REMOVE AND REPLACE PCC SIDEWALK	16	SF
6	REMOVE PCC SIDEWALK	65	SF
7	REMOVE PCC CURB RAMP	43	SF
8	CONSTRUCT PCC SIDEWALK	65	SF
9	CONSTRUCT PCC CURB RAMP	43	SF
10	CONSTRUCT DETECTABLE WARNING PANEL (1 locations)	8	SF
11	REMOVE AND REPLACE FAULTY SUBGRADE	25	TN
12	ADJUST SPRINKLER (AS NEEDED)	1	EA
13	REPLACE CURB INLET TOP WITH ARMOR FACE	2	EA

NOTE TO BIDDERS

- All project procedures, materials, bonds and reserves shall conform to the City of Omaha's Standard Specifications for Public Works Construction, 2024 Edition ("Standard Specifications"). It is the responsibility of the CONTRACTOR to be familiar with the contents of the Standard Specifications. The Standard Specifications can be found at: <https://publicworks.cityofomaha.org/contractors-consultants2/contractors/standard-plates-curb-ramps-and-specifications>
- References to "Standard Plates" refers to the City of Omaha's 2024 Standard Plate list. These Standard Plates can be found at: <https://publicworks.cityofomaha.org/2024-standard-plate>

The CONTRACTOR is referred to the following Standard Plates for use on this project:

PLATE NO.	DESCRIPTION	REVISION DATE
1002-02-1, 3, 4	Pavement Repair	02/13/2024
504-01-1	Concrete Curb Ramp	02/13/2024



See Sheet 2 - NORTH

See Sheet 3 - SOUTH



APPLICANT

SID 477
Chris Van Boskirk, Chairman
11440 W. Center Road
Omaha, NE 68144
P: 402.334.0700
F: 402.334.0815
larry@fjblaw.com

DESIGNER

E & A Consulting Group, Inc
Teresa Wooten, P.E.
10909 Mill Valley Road, Suite 100
Omaha, NE 68154
P: 402.895.4700
F: 402.895.3599
twooten@eacg.com

INSPECTOR

E & A Consulting Group, Inc
Randall L. Pierce, P.E.
10909 Mill Valley Road, Suite 100
Omaha, NE 68154
P: 402.895.4700
F: 402.895.3599
rpierce@eacg.com

CONTRACTOR

E & A CONSULTING GROUP, INC.
Engineering • Planning • Environmental & Field Services
10909 Mill Valley Road, Suite 100 • Omaha, NE 68154
Phone: 402.895.4700 • Fax: 402.895.3599
www.eacg.com
State of NE Certificate of Authorization #CA0008

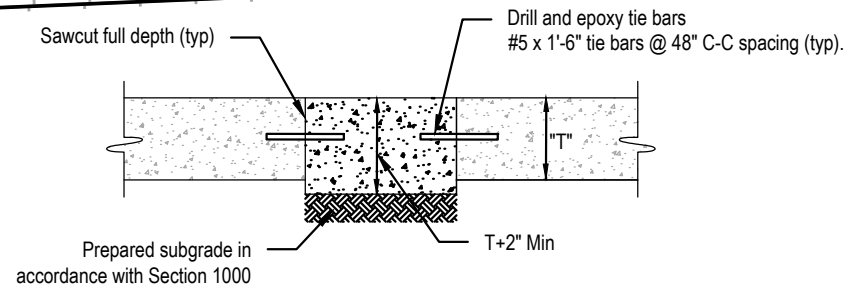
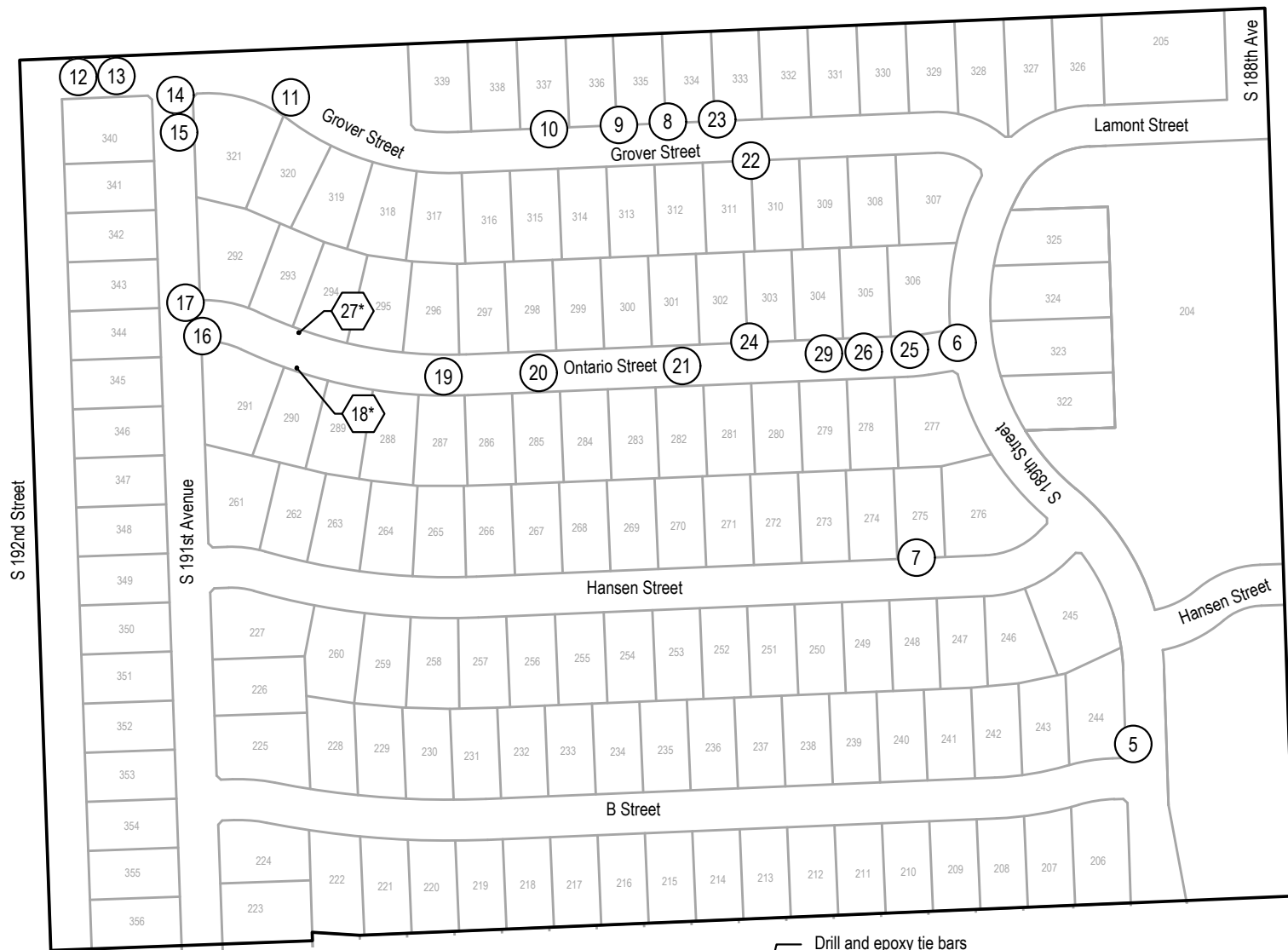
OAKMONT 2024 STREET RECONSTRUCTION
SID 477
DOUGLAS COUNTY, NEBRASKA

COVER

Revisions
Date Description
5/8/2024 TMM JLN
Designed By: TMM
Drawn By: JLN
Scale: 1" = 300'
Sheet: 1 of 5

Proj No: P2001112.019
Date: 5/8/2024
Designed By: TMM
Drawn By: JLN
Scale: 1" = 300'
Sheet: 1 of 5

Jeremy Nichols 5/8/2024 1:32 PM \\EACG.net\shares\Projects\2001112\p19\engineering\cad files\Paving\Oakmont 2024 Street Reconstruction-000.dwg



SMALL AREA CONCRETE PAVEMENT REPAIR DETAIL
NOT TO SCALE

2024 STREET RECONSTRUCTION									
AREA NO.	NO. POURS	SAW CUT L.F.	CURB L.F.	WIDTH	X	LENGTH	LARGE AREA EST S.Y.	SMALL AREA EST S.Y.	NOTES
5	1	39	15	12.0	x	15.0		20.0	
6	2	46	12	13.0	x	16.0	23.1		
	1	38	12	10.0	x	18.0	20.0		
	1	41	15	13.0	x	15.0	21.7		
	1	56		13.0	x	15.0	21.7		
7	1	41	2	13.0	x	15.0		21.7	
8	1	41	15	13.0	x	15.0		21.7	
9	1	41		13.0	x	15.0		21.7	
10	1	41	3	13.0	x	15.0		21.7	
11	1	77	49	16.0	x	49.0	87.1		
12	2	86	10	38.0	x	10.0		42.2	
		45		9.0	x	11.0		11.0	
13	1	40	15	15.0	x	12.5		20.8	
14	2	28	7	29.0	x	32.0	103.1		
		37		12.5	x	11.5	16.0		
15	1	38	13	12.5	x	13.0		18.1	
16	1	29	13	15.0	x	7.0		11.7	
17	1	50		12.5	x	12.5		17.4	
19	1	38	11	12.5	x	13.0		18.1	
20	1	51	26	12.5	x	26.0		36.1	
21	1	47	4	22.0	x	12.5		30.6	
22	1	24	4	4.0	x	20.0		8.9	Curb Inlet Throat
23	1	24	4	4.0	x	20.0		8.9	Curb Inlet Throat
24	2	50	104	55.0	x	25.0	152.8		
25	2	50	68	25.0	x	34.0	94.4		
26	2	50	110	25.0	x	55.0	152.8		
29	1	73		27.0	x	13.0		39.0	
		13	5	6.0	x	13.0		8.7	

2024 STREET RECONSTRUCTION - CURB INLET TOP

AREA NO.	TYPE	NOTES
18*	1	Curb Inlet Top
27*	1	Curb Inlet Top



E & A CONSULTING GROUP, INC.
Engineering • Planning • Environmental & Field Services
10809 Mill Valley Road, Suite 100 • Omaha, NE 68154
Phone: 402.665.4700 • Fax: 402.665.3599
www.eagroup.com
State of NE Certificate of Authorization #CA0008

E & A CONSULTING GROUP, INC.
Engineering Answers

OAKMONT 2024 STREET RECONSTRUCTION
SID 477
DOUGLAS COUNTY, NEBRASKA

NORTH

Revisions: [Table with 2 columns: #, Description]

Proj No: P2001.112.019
Date: 5/8/2024
Designed By: TMM
Drawn By: JLN
Scale: 1" = 20'
Sheet: 2 of 5

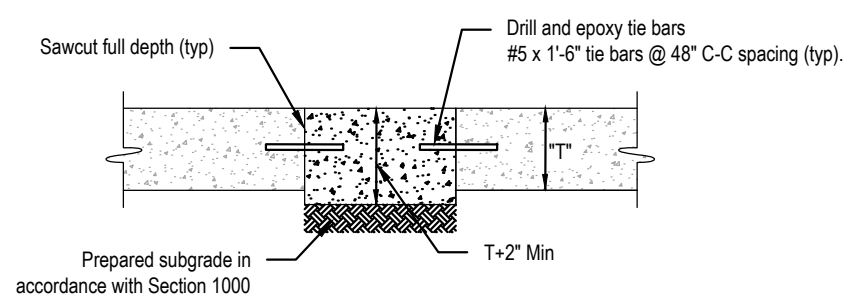
5/8/2024 1:32 PM
Jeremy Nichols

\\EAGC.net\shares\Projects\Projects\2001\112\p19\engineering\cad files\Paving\Oakmont 2024 Street Reconstruction-000.dwg



2024 STREET RECONSTRUCTION									
AREA NO.	NO. POURS	SAW CUT L.F.	CURB L.F.	WIDTH	X	LENGTH	LARGE AREA EST S.Y.	SMALL AREA EST S.Y	NOTES
1	1	33		6.0	x	11.0		7.3	
2	1	47	21	13.0	x	21.0		30.3	
3	1	90	64	13.0	x	64.0	92.4		
4	1	42		10.0	x	11.0		12.2	
28	1	55	30	12.5	x	30.0		41.7	

2024 STREET RECONSTRUCTION						
AREA NO.	TYPE	APPROX. DIMEN.	EST S.F.	NOTES		
A	Curb Ramp	5.00 x 8.50	42.5	ADA Plate - Cast Iron, Adjust Water Valve, Adjust Sprinkler (as needed)		
B	Sidewalk	4.00 x 4.00	16.0	Adjust Water Valve		
C	Sidewalk	4.00 x 16.25	65.0	Adjust Sprinkler (as needed)		



SMALL AREA CONCRETE PAVEMENT REPAIR DETAIL
NOT TO SCALE



E & A CONSULTING GROUP, INC. Engineering • Planning • Environmental & Field Services	
OAKMONT 2024 STREET RECONSTRUCTION	
SID 477 DOUGLAS COUNTY, NEBRASKA	
SOUTH	
Proj No: P2001112.019 Date: 5/8/2024 Designed By: TAMM Drawn By: JLN Scale: 1" = 20' Sheet: 3 of 5	10809 Mill Valley Road, Suite 100 • Omaha, NE 68154 Phone: 402.865.4700 • Fax: 402.865.3599 www.eagroup.com State of NE Certificate of Authorization #CA0008
5/8/2024 1:32 PM	
Jeremy Nichols	




2024 STREET RECONSTRUCTION									
AREA NO.	NO. POURS	SAW CUT L.F.	CURB L.F.	WIDTH	X	LENGTH	LARGE AREA EST S.Y.	SMALL AREA EST S.Y.	NOTES
1	1	33		6.0	x	11.0		7.3	
2	1	47	21	13.0	x	21.0		30.3	
3	1	90	64	13.0	x	64.0	92.4		
4	1	42		10.0	x	11.0		12.2	
5	1	39	15	12.0	x	15.0		20.0	
6	2	46	12	13.0	x	16.0	23.1		
	1	38	12	10.0	x	18.0	20.0		
	1	41	15	13.0	x	15.0	21.7		
	1	56		13.0	x	15.0	21.7		
7	1	41	2	13.0	x	15.0		21.7	
8	1	41	15	13.0	x	15.0		21.7	
9	1	41		13.0	x	15.0		21.7	
10	1	41	3	13.0	x	15.0		21.7	
11	1	77	49	16.0	x	49.0	87.1		
12	2	86	10	38.0	x	10.0		42.2	
		45		9.0	x	11.0		11.0	
13	1	40	15	15.0	x	12.5		20.8	
14	2	28	7	29.0	x	32.0	103.1		
		37		12.5	x	11.5	16.0		
15	1	38	13	12.5	x	13.0		18.1	
16	1	29	13	15.0	x	7.0		11.7	
17	1	50		12.5	x	12.5		17.4	
19	1	38	11	12.5	x	13.0		18.1	
20	1	51	26	12.5	x	26.0		36.1	
21	1	47	4	22.0	x	12.5		30.6	
22	1	24	4	4.0	x	20.0		8.9	Curb Inlet Throat
23	1	24	4	4.0	x	20.0		8.9	Curb Inlet Throat
24	2	50	104	55.0	x	25.0	152.8		
25	2	50	68	25.0	x	34.0	94.4		
26	2	50	110	25.0	x	55.0	152.8		
28	1	55	30	12.5	x	30.0		41.7	
29	1	73		27.0	x	13.0		39.0	
		13	5	6.0	x	13.0		8.7	

2024 STREET RECONSTRUCTION						
AREA NO.	TYPE	APPROX. DIMEN.			EST S.F.	NOTES
A	Curb Ramp	5.00	x	8.50	42.5	ADA Plate - Cast Iron, Adjust Water Valve, Adjust Sprinkler (as needed)
B	Sidewalk	4.00	x	4.00	16.0	Adjust Water Valve
C	Sidewalk	4.00	x	16.25	65.0	Adjust Sprinkler (as needed)

2024 STREET RECONSTRUCTION - CURB INLET TOP		
AREA NO.	TYPE	NOTES
18"	1	Curb Inlet Top
27"	1	Curb Inlet Top




 E & A CONSULTING GROUP, INC. Engineering • Planning • Environmental & Field Services <small>10889 Mill Valley Road, Suite 100 • Omaha, NE 68154 Phone: 402.265.4700 • Fax: 402.965.3599 www.eag.com State of NE Certificate of Authorization #CA0008</small>	OAKMONT 2024 STREET RECONSTRUCTION <small>SID 477 DOUGLAS COUNTY, NEBRASKA</small>	TOTAL QUANTITIES				
Proj No: P2001112.019 Date: 5/8/2024 Designed By: TMM Drawn By: JLN Scale: NO SCALE Sheet: 4 of 5	Revisions <table border="1" style="width: 100%; border-collapse: collapse;"> <tr> <th style="width: 10%;">Date</th> <th style="width: 90%;">Description</th> </tr> <tr> <td> </td> <td> </td> </tr> </table>	Date	Description			5/8/2024 1:32 PM Jeremy Nichols
Date	Description					



UNPLATTED



 E & A CONSULTING GROUP, INC. Engineering • Planning • Environmental & Field Services <small>10889 Mill Valley Road, Suite 100 • Omaha, NE 68154 Phone: 402.865.4700 • Fax: 402.865.3599 www.eag.com State of NE Certificate of Authorization #CA0008</small>	OAKMONT 2024 STREET RECONSTRUCTION <small>SID 477 DOUGLAS COUNTY, NEBRASKA</small>	COMPOSITE MAP									
Revisions: <table border="1" style="width: 100%; border-collapse: collapse;"> <thead> <tr> <th>No.</th> <th>Date</th> <th>Description</th> </tr> </thead> <tbody> <tr> <td>1</td> <td>5/8/2024</td> <td>TAM</td> </tr> <tr> <td>2</td> <td></td> <td>JUN</td> </tr> </tbody> </table>			No.	Date	Description	1	5/8/2024	TAM	2		JUN
No.	Date	Description									
1	5/8/2024	TAM									
2		JUN									
Program No: P2001121015 Date: 5/8/2024 Designer: TAM Drawn By: JUN Scale: 1" = 200' Sheet: 5 of 5											
5/8/2024 1:32 PM Jeremy Nichols \\EACG.net\shares\Projects\2001121015\engineering\cad files\Paving\Oakmont 2024 Street Reconstruction-000.dwg											